

The Gear

Serving the 527 Members of the SWE-WI Section

Mar - 2025

WE Local Milwaukee 2025

Article by Susan Thomas Schlett, F. SWE



Janke, Susan Schlett (me), Heidi Balestrieri (LHC Chair), and Devyn Yates. Prior to the conference, Susan, Heidi and Sam accepted a Conference Welcome Proclamation from Shawn N. Reilly, the Mayor of the City of Waukesha (which is where the conference was held technically, see upper left photo.) If you travel around Waukesha, you will see a variety of large guitars in honor of hometown guitar icon Les Paul. Upper right photo shows Sandra Mandawe Paglieroni and myself with one of the coolest guitars!



LAB Chair Sandra Mandawe Paglieroni and LHC member Susan Thomas Schlett in downtown Waukesha for WE Local Milwaukee

Inside this Issue

WE Local Milwaukee 2025 1

2025 SWE-WI Scholarship Recipients 6

Knead to Network: A Delicious Success! 8

What is Your Bolognese? 9

SWE-WI Elected Officers 10

SWE-WI Appointed Positions 11

STRATTEC & SWE Event 13

SWE-WI Outreach Opportunities 14

SWE-WI Outreach Policies 15

SWE 75th Anniversary 16

Key Upcoming Events

- Green Bay Networking – Green Bay, WI – 4/16 6:00 PM
- STRATTEC & SWE Event – Milwaukee, WI – 4/23 4:45 PM
- Madison Area Social – Madison, WI – 5/22 4:30 PM
- End of FY25 Family Picnic – Pewaukee, WI – 6/21 11:00 AM

Stay up to date on all SWE-WI events at our [Google Calendar \(link\)](#)

WE Local Milwaukee 2025 (continued)

Despite some conference logistical challenges, we were able to host 543 attendees (214 collegiates + 314 professionals + 15 STEM reentry or unemployed). Attendees arrived from at least 33 states, 22 colleges and one province.

When SWE Headquarters (HQ) informed us about one year ago, that our WE Local would begin on Pi Day, 3/14/2025, we took that Pi/Pie theme and ran with it! Confetti, flags, and host committee scarves were all adorned with Pi/Pie! We also had a baby Pi (LHC member Andrea's newborn in photo upper right) and lots of delicious edible pies with me in the bottom right photo. We assisted in piloting a First Time Attendee's Reception at the venue of Ruckert & Mielke which was located just across the street from the main conference venue at the Marriott Milwaukee West. Based upon the turnout of well over 100 attendees, I would say it was a great success! The bottom left photo shows organizers Megan Morrow from Ruckert & Mielke and SWE members Diane Beaver, Tiffany Tang, Susan Schlett and HQ representative Tiffany Swanigan.

Since I serve as the Wisconsin Section of SWE (SWE-WI)'s membership chair, I was thrilled to see so many of our members in attendance! Having support from retired members, such as Mary Dziejwontkoski was special. Mary was our SWE-WI president from FY89 to FY93 (see photo middle right). I love when I can finally match member names to those in-person!



WE Local Milwaukee 2025 (continued)

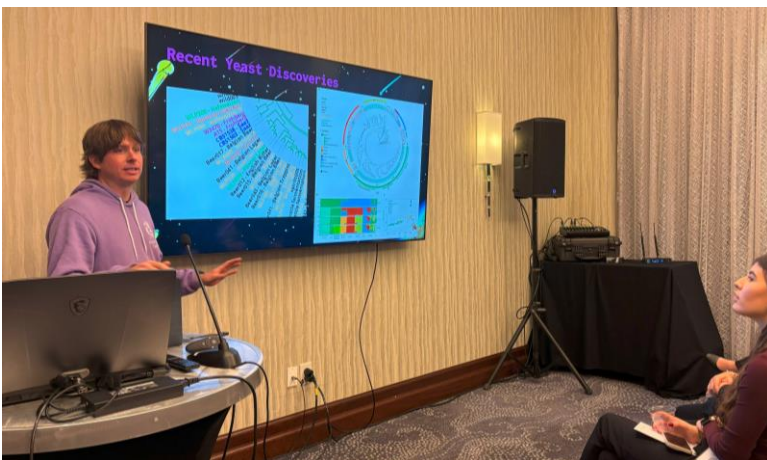


A couple of sessions I would like to highlight include our own SWE-WI member Jessica Young's session entitled *Living Authentically Indigenous: The Importance of Indigenous People in STEM* (see photo upper left). What a fascinating and informative presentation! Another session that I found particularly engaging was Jessica Patel's self-management talk, *Keeping Calm in the Dumpster Fire!* (see photo middle right).

Attendees were treated to another informative session, *The Science of a Brewery - It's More*



than Fermentation, which paid homage to one of Milwaukee's historic traditions - brewing! Engineer and founder of Amorphic Beer, Ron Hockersmith, shared the story of how he and fellow engineers applied techniques they learned in their technical courses or on the job in defense, medical device and engine industries to enhance their passion of craft brewing (see photo bottom left). From sharing the bioengineering of yeast strains for different tastes to using python scripts to scrub publicly available beer sales and reviews to determine trends; there was tons of data for every engineer in the room to geek out on. All throughout the presentation, Ron also included beer samples that helped illustrate the key features the Amorphic Beer team focused on when crafting the different brews (see photo bottom right). Overall, this was a very exciting session applying engineering principles from many different disciplines in a unique way to illustrate just how much science there is behind craft brewing.



SWE Wisconsin has been recognized for a FY24 Bronze Mission Award! Mission awards recognize SWE groups that embody SWE core values and demonstrate continuous improvement and growth as they work to achieve the Society's strategic goals. You can learn about all FY24 Mission and Multicultural Recipients at: [FY24 Mission & Multicultural Recognition](#).

WE Local Milwaukee 2025 (continued)

In addition to WE Local sessions, a philanthropic activity was held where 250 catapult kits were assembled for STEM student outreach. The hands-on activity of the Friday Night WE Local Social aimed to inspire a future-ready STEM workforce by introducing local youth to STEM concepts through engaging, fun projects. The initiative was a collaborative effort led by STEM Forward Program Manager Theresa Wolf and SWE-WI Society Liaison Gina Janke, F. SWE, who handled logistic planning, material lists, and procuring the kit items. WE Local attendees assisted in assembling the kits in three assembly lines, using low-cost materials such as craft sticks, rubber bands, binder clips, plastics spoons, and yarn pom-poms (see photo upper right). These kits will be distributed to classrooms throughout the Milwaukee Public Schools district and for SWE-WI outreach events. Special thanks are extended to Sentry Equipment for printed instruction sheets for individual kits and classrooms.



In addition to the outreach kit building station, the WE Local Celebration included Pi, Pie, and Wisconsin themed trivia as well as lawn games and a photo booth. Pie was served along with Wisconsin favorites such as Sprecher root beer.



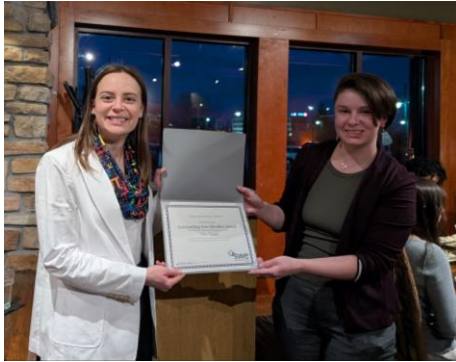
SWE Wisconsin is on the 'Gram! Follow the new SWE Wisconsin Instagram account to keep up with the latest happenings throughout the section, and share your SWE Wisconsin news on social media!



[@swe_wisconsin](https://www.instagram.com/swe_wisconsin)

WE Local Milwaukee 2025 (continued)

In addition, that Friday evening we invited all to join us in celebrating SWE-WI with a dinner organized by Emily Demchik. Here we recognized four scholarship recipients and our internal section award recipients. Heidi Balestrieri received our section MVP award for her outstanding leadership on the LHC while maintaining a very active role as our section outreach chair (upper right photo); most active new member was Chloe Cegelski for her contributions to the LHC (middle left photo); our significant corporate support award went to Sentry Equipment for their awesome company tour and contributions to our outreach efforts; and the collegiate section we highlighted was Marquette University for their 2nd annual SWE convention themed "Your True Potential: Embrace, Empower & Excel" (middle right photo).



SWE-WI Scholarship Committee Chair Gretchen Borden presented four scholarships with a combined total of \$6700. The scholarship recipients this year were: Katherine Baker, Tory Cantrell and Carsyn Boggio - all from Michigan Technological University; and Lucia Frieling - from the University of Wisconsin at Madison.



Others we were excited to see in attendance at WE Local Milwaukee were our SWE CEO Karen Horting (bottom left photo) and the current president of ASME Susan Ipri-Brown (bottom right photo). We thank all who attended and worked hard to support this great event. Engagement and participation matters and we had lots of it!

Others we were excited to see in attendance at WE Local Milwaukee were our SWE CEO Karen Horting (bottom left photo) and the current president of ASME Susan Ipri-Brown (bottom right photo). We thank all who attended and worked hard to support this great event. Engagement and participation matters and we had lots of it!

Be sure to mark your calendar for the next 2026 WE Local conferences. I hope to see you there!

- **WE Local Austin, Texas - February 20-21, 2026**
- **WE Local Portland, Oregon - February 27-28, 2026**
- **WE Local Columbus, Ohio - March 13-14, 2026**

Article Written by Susan Thomas Schlett, F. SWE (3/22/2025)
Thanks to Sam Billetdeaux & Gina Janke for contributing to this article.
Thanks to Sandra Mandawe Paglieroni for photo contribution.



2025 SWE-WI Scholarship Recipients

Congratulations to all the SWE-WI Scholarship Recipients!



Katherine Baker

Michigan Tech
SWE-WI Scholarship (\$2500)

Katherine is an undergraduate student at Michigan Technological University, where she is pursuing a degree in Chemical Engineering. Originally from Oklahoma, she has a passion for innovation and lifelong learning. Outside of academics, Katherine enjoys swing dancing, knitting, and downhill skiing. She is also actively involved in mentoring younger students in her department and supporting women in STEM. She is honored to be a recipient of a 2025 SWE-WI scholarship and looks forward to contributing further to the engineering community.

Tory Cantrell

Michigan Tech
SWE-WI Scholarship (\$2000)

Tory is a third-year Mechanical Engineering student at Michigan Technological University. An active member of SWE who helps plan outreach events for the Keweenaw community and other local communities as part of the Campus and Community Committee at Michigan Tech. She is also a member of Tau Beta Pi and plays clarinet in the Huskies Pep Band. Outside of school, Tory enjoys riding horses and spent three years working at Girl Scout Camp Linden. She is currently studying abroad in Scotland!



Check out the brand-new Wisconsin Society of Women Engineers LinkedIn Page! Follow this page to keep up with the latest happenings throughout the section and share your SWE Wisconsin news with us!



[Wisconsin Society of Women Engineers](#)

2025 SWE-WI Scholarship Recipients (continued)



Lucia Frieling

University of Wisconsin - Madison
SWE-WI Scholarship (\$1250)

Lucia is a third-year student at the University of Wisconsin - Madison majoring in biomedical engineering with a focus in bioinstrumentation. She has been involved with SWE since her first semester at UW-Madison and is forever grateful for the opportunities and connections that it has provided to her. This year, she co-led the UW-Madison SWE Tech Team in an engineering project sponsored by a medical device company and looks forward to her team completing their project fabrication! Outside of school, Lucia loves exploring the city of Madison and going on runs through campus.

Carsyn Boggio

Michigan Tech
SWE-WI Scholarship (\$1000)

Carsyn is a Junior at Michigan Technological University, studying Environmental Engineering with a minor in German. She has been an active member in SWE since her freshman year at Michigan Tech, taking on the role of Outreach co-chair and Director of the section. Outside of her schoolwork and involvement with SWE, you can find Carsyn enjoying the Upper Peninsula, in practice with the Dance Team at Michigan Tech, or reading a book.



Special thanks to the Scholarship Committee members (Gina Janke, Cassie Volden, Susan Schlett, Katie Vandenberg, and Gretchen Borden – Committee Chair) and to all the Scholarship Judges (Gina Janke, Emily Demchik, Trevor George, Kyela O'Loughlin, Gretchen Hein, Tessa Machado, Natalia Cook Kwiatkowska, Valya Brady, Michelle Lei, Dawn Keppler, and Melissa McTavish) who helped make this program possible.

SWE-WI Newsletter Entries

Send us your stories! We want to see what our professional SWE-WI and affiliated collegiate SWE members are up to! We are looking for events that SWE has hosted, member milestones, interesting articles/books to share, and more! If you have something you want to see in the newsletter, please fill out the following Publicity Request Form and check 'The Gear Newsletter'.
SWE-WI Publicity Request Form: <https://forms.gle/CztgytTXYQB2hK6JA>

Knead to Network: A Delicious Success!

Article by Michal Riege

What an incredible evening at our Knead to Network event! Our participants dove into the art of sourdough bread-making—learning how to feed and care for a starter, mastering the techniques of shaping the loaf and, of course, baking delicious loaves.

A Huge THANK YOU to Tracy Rice for opening her home and sharing her Sourdough knowledge.

From sharing baking tips to exchanging career stories, we loved seeing our SWE community come together in such a warm and inspiring way.

Thank you to everyone who joined us—we hope you enjoyed your homemade sourdough.



SWE-WI Advertisement Information

Are you a company looking to show your support of SWE-WI, advertise on our website or in our newsletter, or post a job opening? If so, we want to hear from you! If you are interested, please find additional details and fill out the contact form on our corporate involvement page of the SWE-WI website:

<https://wisconsin.swe.org/corporate-involvement/>

What is Your Bolognese?

Article by Michal Riege

At WE24 in Chicago, I attended an Inspiration Insight session that left a lasting impact: "You First, Always: The Role Your Wellbeing Plays in the Future of Innovation" by Kaz Maurice-O'Leary.

Kaz shared her personal journey through burnout caused by chronic workplace stress, and how she effectively manages it today. Her story resonated

deeply with me, especially as I was navigating profound grief after losing my mother a year prior. She reminded us that burnout isn't just about work—it's intertwined with life's challenges: grief, job changes, caregiving, feeling disconnected from your mission, and more.



One of the most powerful moments was an exercise where we listed our goals for the next six months alongside what fuels us and brings us gratitude. The takeaway? These two lists should align to create a sense of fulfillment.

Kaz also spoke as a leader, offering insights on preventing burnout in teams:

- Looking out for people even when they aren't in the room
- Humanizing timelines so employees can prioritize family
- Allowing for roadblocks instead of pushing through at all costs

Her key message? Stay human in a tech-driven world, innovate with purpose, and set a sustainable pace.

One unique and beautiful theme she wove throughout the session was the science of shared meals—how the frequency of gathering around food can profoundly affect our well-being.

I highly encourage all women in engineering to watch this session. Kaz's personal story and practical strategies will inspire you to prioritize your well-being, lead with empathy, and build resilience. After watching, ask yourself: "What is your Bolognese?"

We Rise Together!

https://advancelearning.swe.org/courses/67277/sections/74675/video_presentations/322396

**Green Bay
Networking
Event (4/16)**

Join the Green Bay SWE-WI members for a networking event. Meet on **April 16th** at 6PM at the Titledown Tap Room. If you have any questions, you can contact Katie at kbuchalski23@gmail.com . Hope to see you there!

TITLETOWN

SWE-WI Elected Officers

SWE runs on a fiscal year from July 1st to June 30th. Elections and appointments for FY26 roles in the SWE-WI section will be starting very soon! Are you looking to get more involved with SWE? There are plenty of opportunities that can fit any desired involvement level. If you are interested in learning more, reach out to FY25 SWE-WI President, Kyela O'Loughlin or FY25 Membership/Data Officer, Susan Schlett.

Elected Officers

President – Oversees the entire SWE-WI Section and elected positions. The President runs monthly executive committee meetings that are approximately 1 hour long. This position also plans and manages two in-person strategic planning meetings in the summer and winter. Typically attends Society level and WE Local conferences. (2-4 hours/month).

VP2 Collegiates – Be the SWE-WI professional section contact for local SWE collegiate sections via email, video calls, and in-person visits (as needed). Provide support for collegiate sections answering any questions or issues. Maintain and update collegiate section contact information. Attend virtual monthly SWE-WI leadership meetings, attend bi-annual in-person SWE-WI leadership strategic planning meetings, and send email communications updates to collegiate sections at the start, middle, and end of their semesters. (1-2 hours/month)

Secretary Recording – Oversees and coordinates communication subcommittee members as needed. Records minutes during meetings. This position attends the two strategic planning meetings in person. (2-3 hours/month)

Treasurer – Oversees the SWE-WI account and manages the budget for the year. This position also oversees the scholarship committee. The treasurer maintains the sections taxes and other government documents to keep it in good standing. This position attends the two strategic planning meetings in person (2-3 hours/month)

VP1 Professional – Oversees the members in the membership, professional development, and networking groups. Supports Spring Forward chair with annual event. Attend virtual monthly SWE-WI leadership meetings and attend bi-annual in-person SWE-WI leadership strategic planning meetings. (2 hours/month)

VP3 Outreach – Oversees outreach coordinator and communicates events to section. Submits events to society. Reaches out for new events. (3-16 hours/month)

Secretary Society Liaison – Reviews governance updates from society and reports back to the section. Writes an article about governance and society happenings to the newsletter. Backup to Secretary Recording for recording minutes at monthly meetings should they be unavailable. (2 hours/month)

**End of FY25
Family Picnic
6/21**

Save the Date for a SWE-WI family picnic celebrating the end of FY25! Event will take place at Pewaukee Kiwanis Village Park on **Saturday 6/21** at 11AM. More details and sign-ups will be sent out closer to the event. We hope to have a great turnout so add this to your calendar today!



SWE-WI Appointed Positions

Appointed Positions

Reports to VP1 Professional - Professional Development Committee

Nominating Chair – Is a SWE-WI member who is not planning to run for an elected section officer position. Attempts to organize a nominating committee with two other SWE-WI members who are not planning to run for an elected section position in that particular SWE fiscal year (July 1 - June 30). The committee reviews the most current section membership roster for who to suggest for leadership roles. They work with the current section EC to see who is interested in running for elected positions. By April the committee puts together a ballot which is electronically sent to the section members for voting over a two week period. The committee tabulates the voting and reports the results to those who have run for positions, as well as the EC and the entire section membership. (<1 hour/month)

Membership/Data Officer – Analyzes the membership numbers and welcomes new members. It is recommended that the person in this role review the section membership roster minimally on a monthly basis for accuracy. The roster is obtained from SWE Headquarters. It is helpful to attempt to contact all new members, preferably by telephone, to “Welcome them to SWE-WI” and to “verify their email address”. Names of new members and their email addresses should be relayed to the EC and in particular to whoever maintains the SWE-WI section distribution list on a monthly basis. If any roster errors are discovered, such as collegiate members being incorrectly assigned to our SWE-WI professional section, then that information should be given to SWE Headquarters for a section transfer. (<1 hour/month)

Corporate Liaisons – Assists communications committee in coordinating communications with corporate partners.

Conference Coordinator – Coordinate section meetups at the annual society conference and WE local.

Event Planning Milwaukee – Plans social and professional development networking events in the Milwaukee area. (<1 hour a month)

Event Planning Madison – Plans social and professional development networking events in the Madison area.

Event Planning Fox Cities – Plans social and professional development networking events in the Fox Cities area.

Event Planning La Crosse – Plans social and professional development networking events in the La Crosse area.

Spring Forward Chair – Plans Spring Forward annual professional development event. Create a sub-committee to help plan the event. (2-4 hrs/month)

**Madison Area
Social
5/22**

Join SWE-WI members in the Madison area for a social on Thursday, 5/22 at the Boneyard Dog Park and Biergarten. More details will be sent closer to the event!



SWE-WI Appointed Positions (continued)

Appointed Positions (continued)

Reports to VP3 Outreach - Outreach Committee

Milwaukee Outreach – Plans and volunteers with Milwaukee outreach events.

La Crosse Outreach – Plans and volunteers with La Crosse outreach events.

Fox Cities Outreach – Plans and volunteers with Fox Cities outreach events.

Reports to Secretary 1 Recording - Communications Committee

Google Coordinator – Sends weekly emails of happenings in the section and manages the email account.

Webmaster – Manages section website and updates for events. (1 hour/month)

Newsletter Editor – Creates newsletter every other month. Collects and edits submissions. (2 hours/month)

Social Media Coordinator – Manages Facebook page. LinkedIn and other social media with society.

Corporate Liaisons – Assists communications committee in coordinating communications with corporate partners.

Reports to Secretary 2 - Society Liaison

Mentor Coordinator – Coordinates mentor relationships in the section.

Herstorian – Makes a digital reference of SWE-WI history.

Internal Awards Chair – Coordinates nominations for and presentation of internal awards given out annually at Spring Forward. (1 hour/month).

External Awards Chair – Works with eligible section members to nominate them for SWE awards. Assists nominees in obtaining letters of support and works with them to write up the required documentation to complete an accurate awards packet that is submitted to SWE Headquarters prior to the program deadline. The chair requires at least two hours per month during the award period (currently December-March timeframe).

Reports to Treasurer

Scholarship Chair – Sends out submission information and chooses scholarship winners. Fundraising. Coordinate with corporate liaison.

SWE Virtual Topic Discussions

There are two topics left for the FY25 lunch discussions. These are at 11:30 AM – 12:30 AM CST on the Fridays listed below. Please contact Andrea (awfalasco@gmail.com) if you would like the Zoom call info.

April 11th – Traveling for Work
June 13th – Parenting Tips and Tricks

STRATTEC & SWE Event

STRATTEC Security Corporation is excited to welcome professional and collegiate SWE members to attend a manufacturing tour followed by dinner and networking on **Wednesday April 23rd!** STRATTEC has zinc die casting and progressive metal stamping manufacturing processes on-site. Please bring safety glasses if you have them!

STRATTEC Address: 3333 W Good Hope Rd Milwaukee, WI 53209

Agenda:

4:45 – 5:00pm Arrive/Check-in

5:00 – 5:30pm Tour

5:30 – 6:00pm Dinner

6:00 – 7:00pm Networking



Please RSVP by April 14th via this [link!](#)



Diverse: a SWE Podcast Pioneering Inclusive Change in STEM is a great resource to listen and discuss with other woman engineers! For example, Episode 307 discusses how getting fired became a catalyst for change in Lori McDowell's life.

Learn more and listen to episodes for free at: <https://swe.org/podcast/>

SWE-WI Outreach Opportunities

Be That Engineer!

Engineering Role Model Volunteers needed for upcoming outreach opportunities! No prior experience is necessary, all information needed to support will be provided by the outreach activity organizer. This is a great time to get involved with SWE-WI outreach!

Upcoming Outreach Events:

- April 4, 2025 – Waukesha STEM Academy Saratoga (8:30 AM – 9:30 AM)
Talk with Future City Trailblazer award winners to talk about STEM careers
- April 25, 2025 – EMDC National Competition in Waukesha (9:30 AM – 12:00 PM)
Judge SWE-WI's special award at the EMDC championships at WCTC. EMDC is a design competition similar to Rube Goldberg. Sign up at this [link](#) if interested.
- May 2, 2025 – Contrapt Judging in Milwaukee (9:00 AM – 12:00 PM)
Judge SWE-WI's Most Innovative Step Award for the 2025 Contrapt for Middle School Competition at MSOE Kern Center. Sign up at this [link](#) if interested.
- May 9, 2025 - Contrapt Judging in Waukesha (9:00 AM – 12:00PM)
Judge SWE-WI's Most Innovative Step Award for the 2025 Contrapt for Middle School Competition at WCTC. Sign up at this [link](#) if interested.
- May 29, 2025 - Math-In Day in Waukesha (9:00 AM – 3:30PM)
Volunteer with SWE-WI to visit classrooms and talk about engineering with students from all grades as they build catapults. Sign up at this [link](#) if interested.

Contact Heidi Balestrieri at swewioutreach@swe.org for questions or more details!

Certificate of Merit Program:

SWE-WI is honoring Senior female High School students who have shown excellence in math and science courses with a Certificate of Merit. SWE-WI members with a connection to a high school are asked to pass the link and information on to teachers, counselors or administrators.

Teachers/Counselors/Administrators at Wisconsin and Upper Peninsula of Michigan High Schools can nominate up to 3 students who meet the criteria (see [link](#) for criteria and more information). Schools are responsible for choosing students to nominate. Please send nominations before **April 15th**.

SWENext Membership



SWENext is a way to become part of SWE as a student through the age of 18. Joining is free, any student 13 or older can become a SWENexter on their own, for those younger than 13, a parent will need to be the primary contact. When registering for SWENext use event code: **Wisconsin**
Learn more about SWENext visit: <https://swe.org/k-12-outreach/swenext-2/>
For any SWENext questions, contact: outreach@swe.org

SWE-WI Outreach Policies

Outreach Volunteer Notice

SWE has implemented a Youth Protection Policy. This year to be a volunteer at a SWE-WI sponsored event you must have completed the Youth Protection course and provide a SWE Certificate to the organizer.

Please consider taking the youth protection course early and sending SWE-WI a digital copy of your certificate. This course will need to be taken every three years. To access the course, or for more information please visit <https://swe.org/youthprotection/>

Outreach Involvement

If you have been involved in an outreach event and are a SWE member, send information about the event to Heidi Balestrieri at swewioutreach@swe.org so we can report the information in the SWE outreach tool.

Information needed for the report: event name, date, all SWE sections that were involved, description of event, breakdown of girls and boys who participated, age of students, number of adult guests, number of SWE member volunteers, number of other volunteers, any partner organizations involved, or any other information to share.

Girl Scout STEM Badges

Would you be interested in working with a Girl Scout Troop and introducing a girl to engineering? The Girl Scouts have introduced new engineering and STEM badges and troops are looking for engineers who would be willing to help them earn these badges. For information on how to be involved, project ideas, and how to find a troop contact swewioutreach@swe.org



Follow the SWE Wisconsin Facebook page to keep up with the latest happenings throughout the section, and share your SWE Wisconsin news on social media!

SWE-Wisconsin

SWE 75th Anniversary

SWE is celebrating 75 years of empowering women! Check out the SWE Founder's Day event on May 6th at The Cooper Union in New York City. The event will be live streamed so everyone around the globe can celebrate this auspicious occasion for the Society!

The event will feature keynote speaker Kellie Gerardi. Kellie is an astronaut, mom, bioastronautics researcher, author, and popular science communicator.



There will also be a panel discussion with SWE Collegiate and Professional members:

- Karen Roth, FY25 SWE President | Moderator
- Jill Tietjen, PE, F.SWE, SWE Past President (FY92)
- Inaas Darrat, SWE President-Elect
- Troy Eller English, SWE Archivist
- Lizelle Ocfemia, The Cooper Union, SWE Section President

You can learn about the Founder's Day Celebration at this [link](#).

To check out even more virtual content about SWE's 75th anniversary, check out the following [link](#).



SWE's Advance Learning Center

Did you know that your SWE membership gets you premier access to SWE's Advance Learning Center? This includes free and discounted content on a wide variety of topics including DEIB, technical innovations, career management & development, CEU/PDH courses, and more!

Check out [SWE's Advance Learning Center](#) today with your SWE login.